



# Marlfields Newsletter

9<sup>th</sup> December 2022



## EVENTS NEXT WEEK

<b>Tues. 13<sup>th</sup> December</b>	<b>KS1 Christmas Production</b> , 9:30am, in the Hall
<b>Wednesday. 14<sup>th</sup> December</b>	<b>EYFS Christmas Production</b> , 9:30am, in the Hall
<b>Wednesday. 14<sup>th</sup> December</b>	<b>CHRISTMAS ACTIVITY DAY</b> with a 'Virtual Sleigh Ride'.
<b>Wednesday. 14<sup>th</sup> December</b>	<b>KS2 Christmas Production</b> , 6:30pm, in the Hall
<b>Thurs. 15<sup>th</sup> December</b>	<b>Christingle service</b> , 9:30am at St. Peter's Church. The church will be open from 9:00am for refreshments.
<b>Thurs. 15<sup>th</sup> December</b>	<b>Children's Christmas Lunch</b> . Please order a.s.a.p. on the Dolce app.
<b>Friday 16<sup>th</sup> December</b>	<b>School closes</b> at the usual time of 3:20pm

## HOLIDAY CLUB

ASM Sports will be supporting a HAF Holiday Clubs at Marlfields during the Christmas Holidays for the following Congleton Area Schools:

Marlfield's Primary Academy, Marton & District CofE Aided Primary School, Buglawton Primary School, Havannah Primary School, Saint Mary's Catholic Primary School, Woodcocks' Well CofE Primary School & The Quinta Primary School.

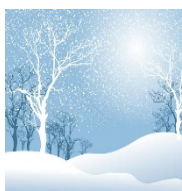
Please visit the following link for details:

<https://asmsports.co.uk/holiday-clubs/>

Due to some of our FSM children not taking up their place The clubs will be open to children from Reception – Year 6 and provide children with an opportunity to remain active, develop new skills and experience a diverse range of activities within a safe and secure environment.

**There is a charge for this**, however, places are also available to children who are eligible to **Free School Meals** and can be secured through accessing the **MyASM** portal using the link above.

## SNOW



As we get deeper into the Winter months, the inevitable is going to happen – **SNOW!** We even had a flurry this afternoon!!!!!!

If snow does fall, we will do our utmost to keep school open. Should we need to **close** during the school day **we will text, e-mail** and send out **Dojo messages** asking you to collect your child(ren) early. *Please ensure that all your contact*

*details are up to date, especially if you have changed your phone number.*

If there is a heavy snowfall during the night and we are unable to open because not enough staff are able to get into school safely, we will **text, send a Dojo message** and make an **announcement** on local radio - **SIGNAL RADIO 96.4 FM / SILK RADIO 106.9FM / RADIO STOKE 94.6FM.**

Please ensure that your child has a warm, waterproof coat with them each day for outdoor play. Gloves and a hat . The children should also wear sturdy sensible shoes to keep feet dry and to provide a decent grip on potentially icy pathways to and from school. We also urge you all to keep to the Gritting Plan, a copy of which is on each gate. This shows you the routes around school that have been gritted.

### **PARKING**

May we please remind you all to park considerately when dropping children off for school and again at pick-up time. Last week we had a few complaints about parents blocking driveways by the Waggs Road and The Westlands entrances.

The Highways Department have been informed by neighbours about the parking situation, and they will be sending round traffic enforcement agents who will be handing out tickets to anyone parked illegally.

### **HOME TIME**

We have noticed that some parents are tending to ‘hover’ where the children come out, which makes it difficult to see parents of children yet to be collected. Once you have collected your child may we please ask you to move away from the gates to make our job easier.

### **LOST PROPERTY**

Can you all please check that what your child brings home is actually their property. We have had a few cases where things have been accidentally picked up and taken home by other children and not returned.

Please clearly label all of your child’s clothing to make identifying them easier. School cannot be held responsible for any lost items, however, we will do our utmost to try to unite the children with missing items.

### **MORE WAR-TIME POEMS by Year 6**

<p>As warning sirens go off, Screams echo in the night. The never-ending sound of blackout shutters closing. German bombs exploding, Building falling down like a house of cards. Blackout is torture as people scream at the explosions. As soon as the bombs stop Sirens wail to break the heavy silence, and a bitter taste is left in the air.</p> <p>By Oliver Booth</p>	<p>Brave souls fight for us Life as death A time of war families’ hearts shred to smithereens Class doesn’t exist Killer Earth Over 6 years’ dread Undercover secrets over the destroyed land Thriller nights</p> <p>By Holly Goodwin</p>
<b>Bombs dropping like pennies from</b>	<b>VERDUNKELUNG</b>

<p>a jar  <b>L</b>ife of dread  <b>A</b> killer world  <b>C</b>allow soldiers not knowing  what's coming ahead  <b>K</b>nowing what the routine is  <b>O</b>n Earth  <b>U</b>nexpected bombs  <b>T</b>o be continued</p> <p>By Lacey Weston</p>	<p>The dark angel surrounds me as I was about to  die  <b>BOOM!</b>  Bombs dropping like pennies from a jar  Scared ..... Scared ..... Scared .....  Sadness comes to everyone at this time  <b>WAIL! WAIL! WAIL!</b>  It is time to hide  The German's are coming  You best be ready.</p> <p>By Vayun Bradley</p>
---------------------------------------------------------------------------------------------------------------------------------------------------------------------------------------------------------------------------------------------------------------------------------	--------------------------------------------------------------------------------------------------------------------------------------------------------------------------------------------------------------------------------------------------------------------------------------------------------------------------------------------------------